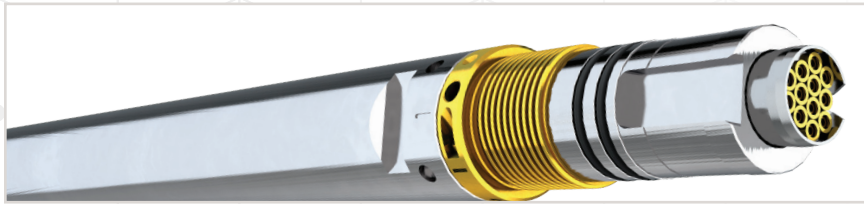


# Intelligent Gamma Ray/Storage (iGS)



Signum's Intelligent Gamma Storage tool is an advanced multi-functional tool providing gamma ray measurement and centralized storage capacity during memory operations. Merging recorded downhole tool data with the time depth log produced by Signum's Intelligent Depth Tracker (iDT) produces a log in standard format.

## LOGGING APPLICATIONS:

- Depth Determination
- Depth Correlation
- Calculation of shale volume
- Lithology Identification

## MECHANICAL:

LENGTH	4.1 ft (1.2 m)
DIAMETER	2.25 in (57 mm)
WEIGHT	32 lbs (14.3 kg)
PRESSURE RATING	20,000 psi (140 Mpa)
GAMMA RAY TEMP RATING	350 °F (175 °C)
STORAGE TEMP RATING	310 °F (155 °C)*
MAX HOLE SIZE	14 in
TENSILE STRENGTH	65,000 lbs (289,134 N)

\*High temp storage tool available

## MEASUREMENT:

OUTPUT	GR, data storage
RANGE	0-2,000 API
VERTICAL RESOLUTION	12 in (30 cm)
ACCURACY	5%
DEPTH OF INVESTIGATION	9 in (23 cm)



— Sodium Iodide GR detector

— Modular memory storage capacity

— High-speed USB download